



**SENDERO
RESOURCES**

Exploring Copper-Gold Assets at
PEÑAS NEGRAS

April 2024

TSXV: SEND



Surrounded by Giants in the Vicuña District, Argentina

NOTICE TO POTENTIAL INVESTOR

Disclaimer and Caution

This presentation amends and restates in its entirety the Investor Presentation of the Corporation dated March 3, 2023 titled “Exploring the Copper-Gold assets at Peñas Negras”.

This presentation does not constitute or form part of and should not be construed as, an offer to sell or issue or the solicitation of an offer to buy or subscribe for securities of Sendero Resources Corp. (“Sendero”) in any jurisdiction or an inducement to enter into investment activity. No part of this presentation, nor the fact of its distribution, should form the basis of, or be relied on in connection with, any contract or commitment or investment decision whatsoever. Forward-looking information contained in this presentation is based on Sendero’s current estimates, expectations and projections, which Sendero believes are reasonable as of the current date. There can be no assurance that these estimates, expectations and projections will prove to have been correct. Historical statements should not be taken as a representation that such trends will be replicated in the future. No statement in this presentation is intended to be nor may be construed as a profit forecast. This presentation includes industry and other statistical information that has been obtained from independent industry publications, government publications, market research reports and other published independent sources. Such publications and reports generally state that the information contained therein has been obtained from sources believed to be reliable. Although Sendero believes these publications and reports to be reliable, it has not independently verified any of the data or other statistical information contained therein, nor has it ascertained or validated the underlying economic or other assumptions relied upon by these sources. Sendero has no intention and undertake no obligation to update or revise any such information or data, whether as a result of new information, future events or otherwise, except as, and to the extent required by applicable securities laws. The securities of Sendero constitute a highly speculative investment. Management considers the securities of Sendero to be appropriate only for investors who can bear the economic risk of the loss of their entire investment in Sendero. Before making any investment, prospective investors should conduct their own independent investigation and analysis of an investment and thoroughly and carefully consider an investment with their own independent financial, tax, legal and accounting advisors. Any copying, reproduction, republishing, translation, transmission, modification, distribution or other exploitation of this presentation, or any elements thereof, without the prior written consent of Sendero is strictly prohibited.

NOTE TO U.S. PERSONS – This Presentation does not constitute an offer to sell or the solicitation of an offer to buy, nor shall there be any sale of securities of Sendero in any jurisdiction in which an offer, solicitation or sale would be unlawful prior to registration or qualification under the securities laws of such jurisdiction. The securities have not been approved or disapproved by the United States Securities and Exchange Commission or by any state securities commission or regulatory authority, nor have any of the foregoing authorities or any Canadian provincial securities regulator passed on the accuracy or adequacy of the disclosures contained herein and any representation to the contrary is a criminal offense. The securities of Sendero have not been and will not be registered under the United States Securities Act of 1933, as amended or the securities laws of any state.

CAUTIONARY NOTE FOR U.S. INVESTORS REGARDING RESERVE AND RESOURCE ESTIMATES - Canadian public disclosure standards, including National Instrument 43-101 Standards of Disclosure for Mineral Projects (“NI 43-101”), differ significantly from the requirements of the Securities and Exchange Commission set forth in Industry Guide 7 (“Industry Guide 7”), and information concerning mineralization, deposits, mineral reserve and resource information contained or referred to herein may not be comparable to similar information disclosed by U.S. companies in accordance with Industry Guide 7.

David Royle (FAusIMM (CP)) supervised the preparation of and approved the scientific and technical information pertaining to Penas Negras Project contained in this presentation. David Royle is a qualified person as defined by National Instrument 43-101 - Standards of Disclosure for Mineral Projects.

WHY INVEST IN SENDERO RESOURCES



Prime Jurisdiction

100% ownership of **120 km²** of claims in highly prospective areas with option to earn 80% in additional **91.7 km²** for total of **211.7 km²**

Geographically located and similar geology to notable projects in Vicuna such as Filo del Sol and Josemaria

Cluster of porphyry, epithermal, and telescoped porphyry targets



Outstanding Team

Outstanding in-country technical team with vast experience in the Andes, led by Hernan Vera, former VP of Barrick Argentina

Porphyry and Andean Expert David Royle as Chief Technical Advisor



Attractive Valuation

Attractive entry point to participate in the exploration of this exciting new Vicuna District

Strong shareholder base with 33% insider ownership



KEY PERSONNEL

Hernan Vera

Chief Executive Officer

Former Barrick Argentina VP, Yamana VP and AngloGold GM; Corporate and Board of Directors experience

Over 34 years of experience in exploration, mine operations, construction and metallurgical plants in South America, North America and Africa

Led the Cerro Vanguardia (AngloGold Ashanti), Veladero (Barrick Gold) and Gualcamayo (Yamana Gold) mines from feasibility to production

Property Vendor of Penas Negras claims

Zachary Goldenberg

Director

Principal of Liberty Venture Partners, a public venture capital investment and advisory firm based in Toronto, Canada

Member of the TSXV Ontario Advisory Committee

Recipient of the ICD.D designation from the Institute of Corporate Directors

JD / HBA from Western Law and Richard Ivey School of Business

Michael Wood

Executive Chairman

Co-Founder and CEO of Reyna Gold (REYG:TSXV) and Co-founder/CFO of Reyna Silver (RSLV:TSXV); Director of Cassiar Gold (GLDC:TSXV)

Director of Emerging Markets Capital, a mining focused investment firm based in Hong Kong

MBA from Hong Kong University of Science and Technology and BSc Economics Cardiff University

Juan Pablo Vera

Senior Geologist

Over 7 years of experience in mineral exploration of porphyry and epithermal systems in Argentina

4 years working at the Peñas Negras Project

Extensive knowledge in GIS technologies, geological modeling, and resource estimation

Geology graduate from the National University of San Juan, Argentina. Recognized for outstanding academic performance

David Royle

Technical Advisor

Senior management positions Newcrest, Newmont and MIM (Mount Isa Mines now owned by Glencore)

Led exploration teams responsible for the discovery of several major discoveries in South America including Cerro Negro (Newmont), Argentina (Au), Rio Blanco (Zijin Mining), Peru (Cu-Mo) and Pierina (Barrick), Peru (Au-Ag)

David is a Chartered Professional Geologist (AusIMM), Fellow of the Society of Economic Geologists and Fellow & CP of the Australian Institute of Mining and Metallurgy

Gladly Castro

Senior Geologist

Geologist with over 15 years of experience in copper - gold porphyry systems with 8 years spent working on the Penas Negras project

Previously worked with Anglo American on the Penas Negras project

Extensive knowledge of the Cerro Verde North and Cerro Verde South target areas

Jimmy Lim

Director

Former Senior Advisor to Morgan Stanley Asia General Industrials Group

Director of 5E Advanced Materials (FEAM: NASDAQ) and Stanmore Resources (SMR:ASX)

20+ years experience in Energy Metals and Mining, former Morgan Stanley, Goldman Sachs and JP Morgan Resources Banker

Recently led 1.4bn Stanmore acquisition from BHP for South Walker Creek and Poitrel metallurgical coal mines

Rolando Lopez

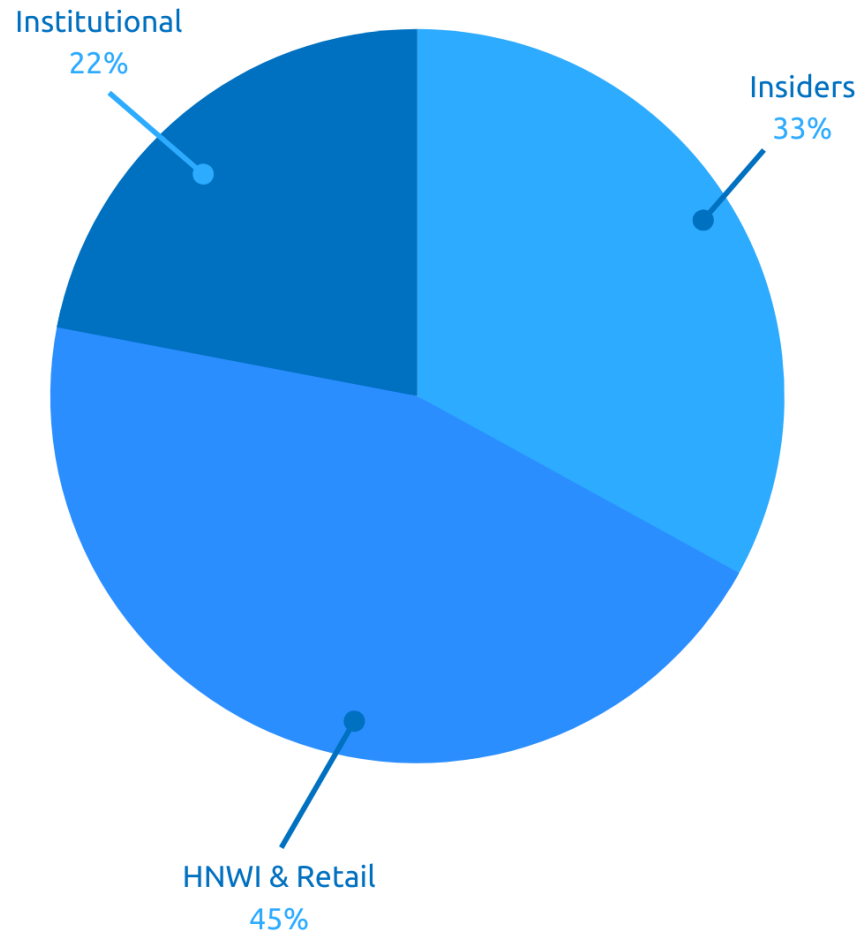
Project Manager

Sr Geologist, 30 years of experience working in, exploration, feasibility, construction and mining operation.

Mine manager and Mining production manager in Cerro Vanguardia mine (Anglogold), General manager of Gualcamayo mine (Yamana Gold), and Mine manager in Don Nicolas mine (Argentine Mining Company).

Graduated: Geologist from UNSJ (San Juan) and of Management Development Program from Cape Town University.

CAPITAL STRUCTURE



Summary Details

Shares Outstanding	66,408,438
--------------------	------------

30c Warrants	14,039,875
--------------	------------

20c Finders Warrants	1,396,665
----------------------	-----------

20c Options	5,100,000
-------------	-----------

3-Month Average Volume	371,091 Shares
------------------------	----------------

Market Capitalization @ 20c	\$13.2m CAD
------------------------------------	--------------------

THE VICUÑA DISTRICT

A Geological Hotspot

(El Indio to Maricunga)

- 40% of the world's current copper supply comes from several giant deposit clusters in the central Andes¹
- The area traditionally consisted of the Maricunga belt and the El Indio belt separated by a gap
- Recent exploration has shown that there is no gap and El Indio to Maricunga is a continuous magmatic belt
- Vicuña Belt formally defined by Sillitoe et al, as 40 km long NE-oriented corridor of porphyry and epithermal deposits from Filo Del Sol to Caserones²



(1) Source: The World Copper Factbook 2022 by International Copper Study Group (ICSG)
 (2) Geology of Porphyry Cu-Au and Epithermal Cu-Au-Ag Mineralization at Filo del Sol, Argentina-Chile: Extreme Telescoping During Andean Uplift

EMERGING VICUNA BELT

Giant Cluster of Telescoped Porphyry Systems

- Vicuña belt formally defined for the first time in May 2023 by **Sillitoe et al¹**, in geological paper: **Geology of Porphyry Cu-Au and Epithermal Cu-Au-Ag Mineralization at Filo del Sol, Argentina-Chile: Extreme Telescoping During Andean Uplift**
- Extensive removal of the Oligocene to early Miocene volcanic cover occurred in response to the kilometer-scale uplift of Permo-Triassic basement on major N to NE trending reverse faults¹
- Very **rapid regional uplift**, continuous mineralizing activity and **high rates of surface erosion** result in a **“Telescoped” Cu-Au Porphyry Systems”**²
- Magmatism related to porphyry and epithermal deposits in the Vicuna Belt was formed in the **Late Oligocene to Middle Miocene (25-14 Ma)**¹

(1) Geology of Porphyry Cu-Au and Epithermal Cu-Au-Ag Mineralization at Filo del Sol, Argentina-Chile: Extreme Telescoping During Andean Uplift Richard H. Sillitoe et al
 (2) Comments on selected Porphyry copper prospects in Northwestern Argentina and Northern and Central Chile, May 2012, Richard H. Sillitoe

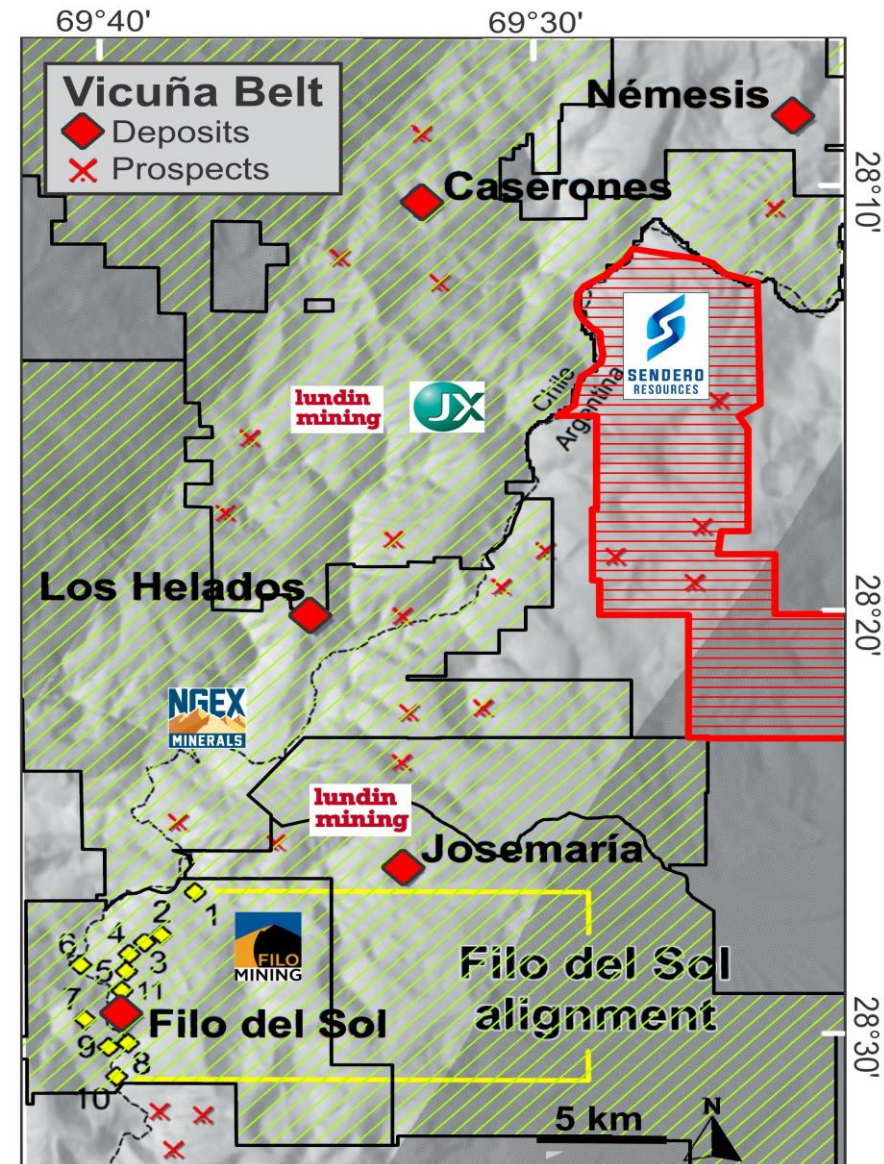
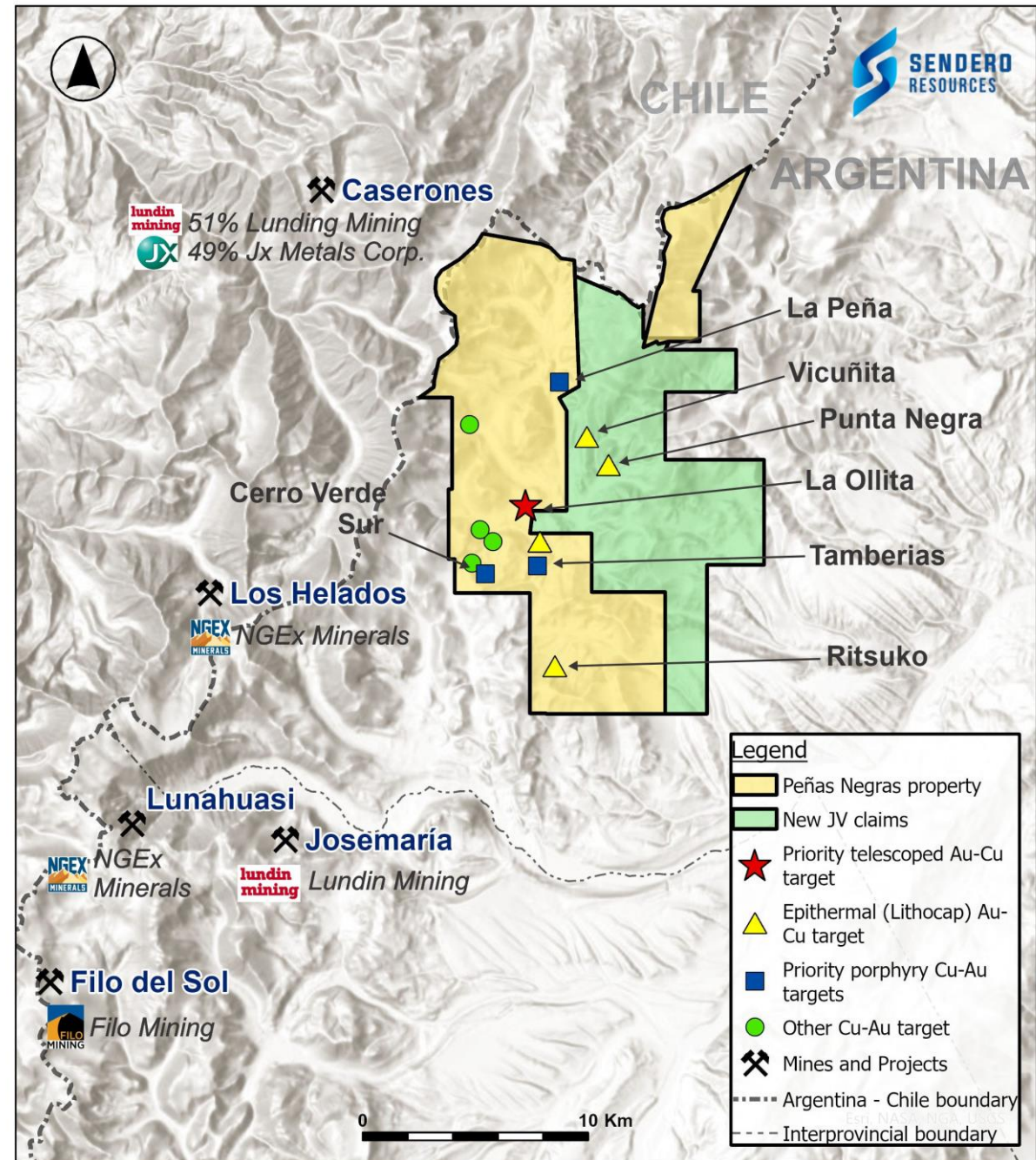


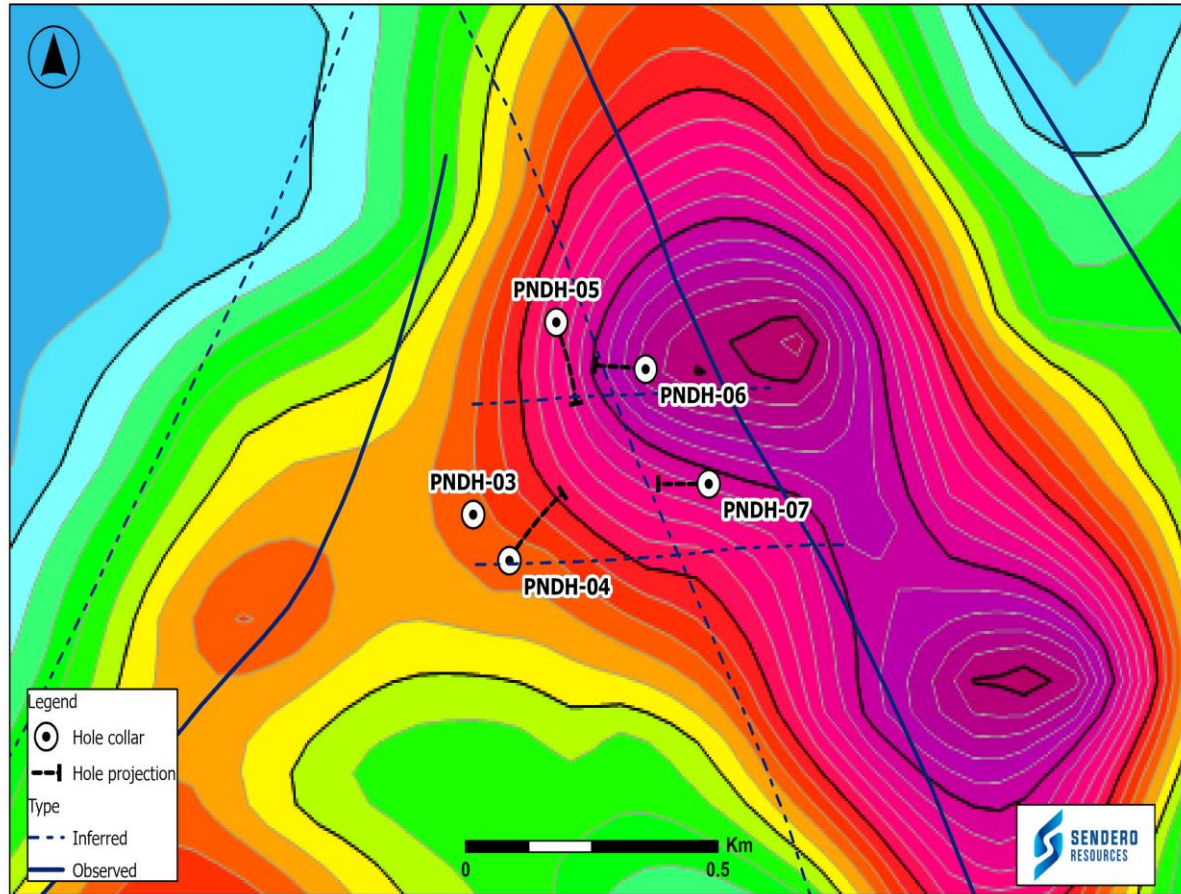
Figure 1: Vicuña Belt Source: Geology of Porphyry Cu-Au and Epithermal Cu-Au-Ag Mineralization at Filo del Sol, Argentina-Chile: Extreme Telescoping During Andean Uplift. Richard H. Sillitoe et al May, 2023

PEÑAS NEGRAS PROJECT OVERVIEW

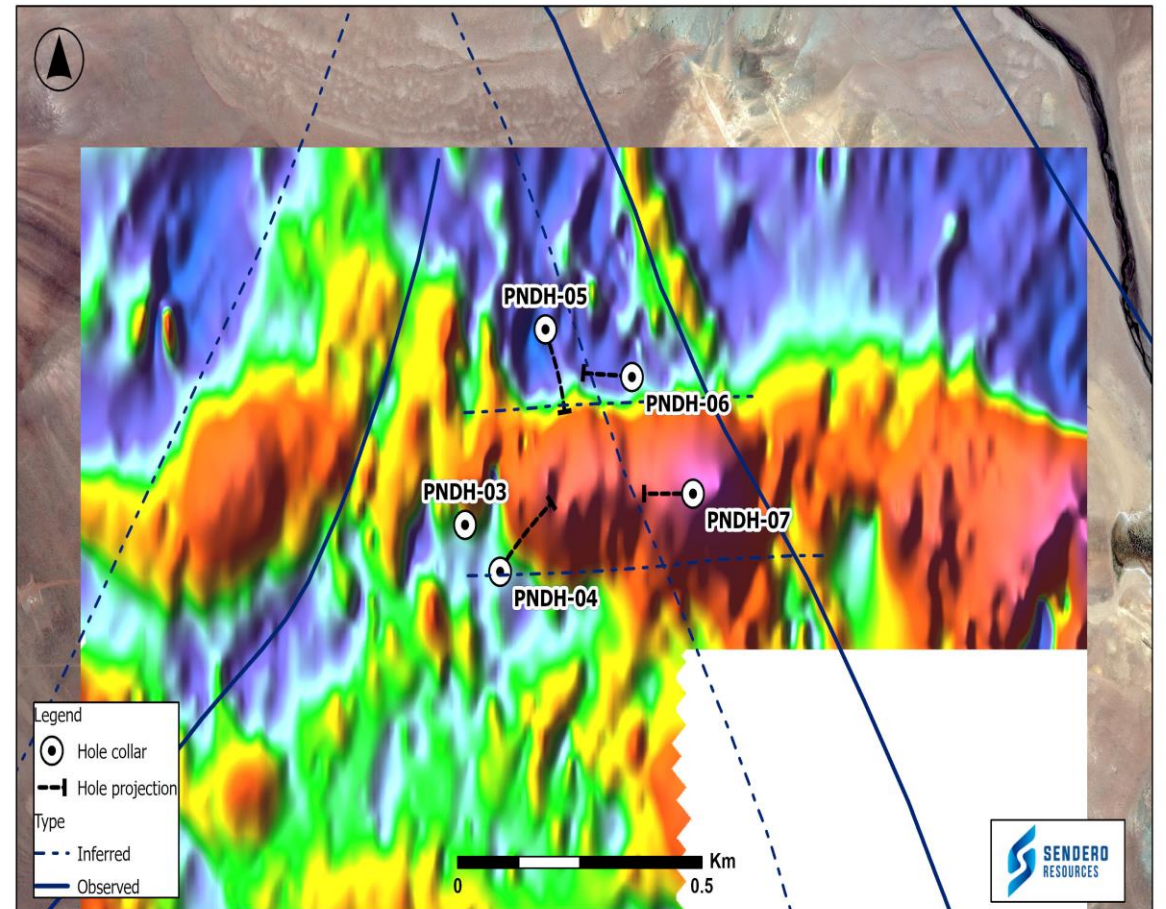
- 100% ownership of **120 km²** of claims in highly prospective areas with option to earn 80% in additional **91.7 km²** for total of **211.7 km²**
- Surrounded by **world-class super giant discoveries:**
- **Josemaría:** M&I Resource 1.1bt of 0.29% Cu, 0.21 g/t Au and 0.9 g/t Ag
- **Caserones:** M&I Resource 1.5bt of 0.28% Cu, 100ppm Mo
- **Los Helados:** Indicted Resource 2bt of 0.40% Cu, 0.15 g/t Au and 1.5 g/t Ag
- **Filo Del Sol:** Indicated Resource 432.6mt of 0.33% CU, 0.33 g/t Au and 11.5 g/t Ag



LA OLLITA - COMPOSITION HIGH-SULFIDATION EPITHERMAL/PORPHYRY (TELESCOPED) SYSTEM GEOPHYSICAL TARGETING WITH DRILL HOLE LOCATIONS



Induced Polarization (IP)

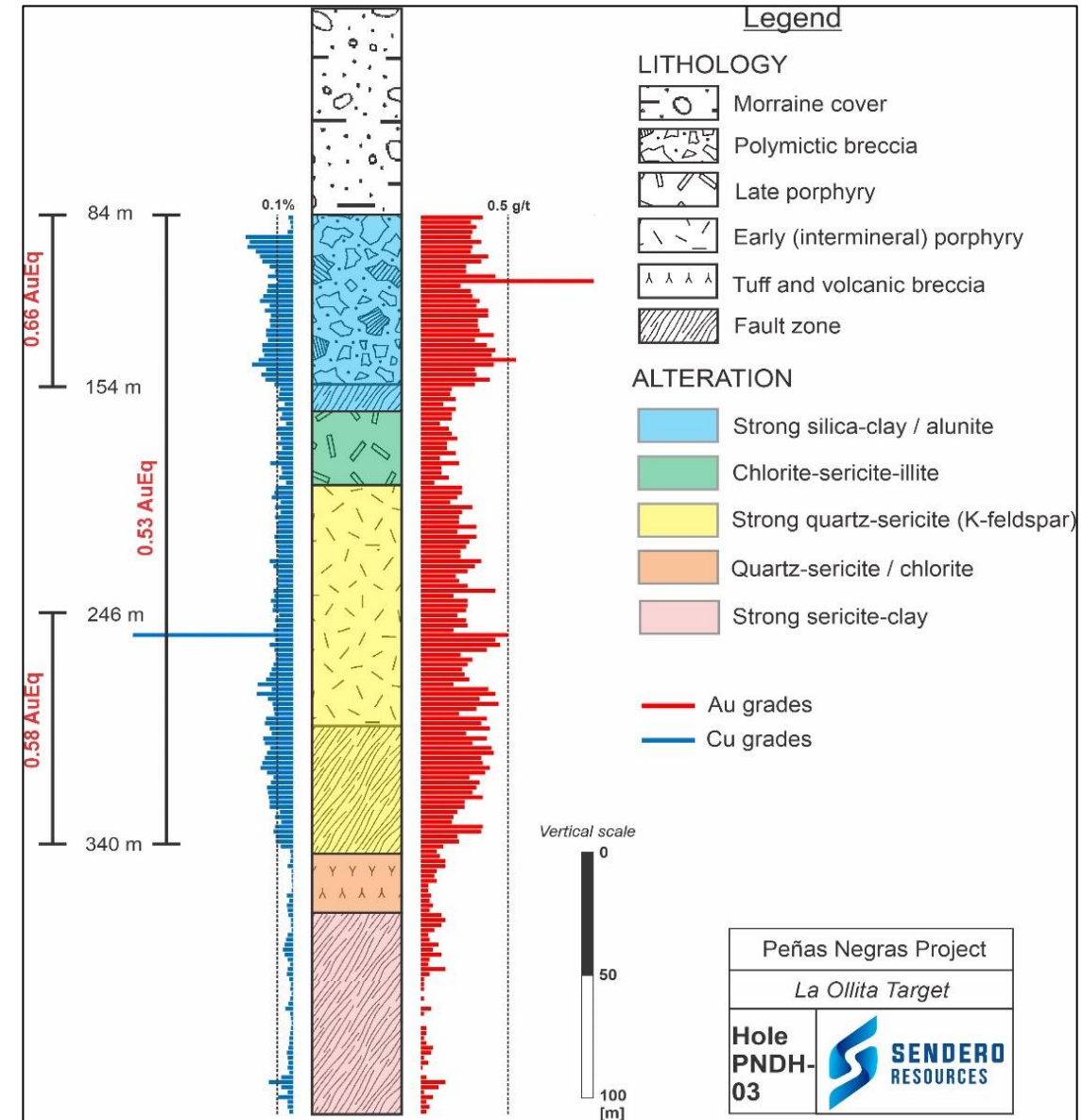


Ground Magnetics

LA OLLITA

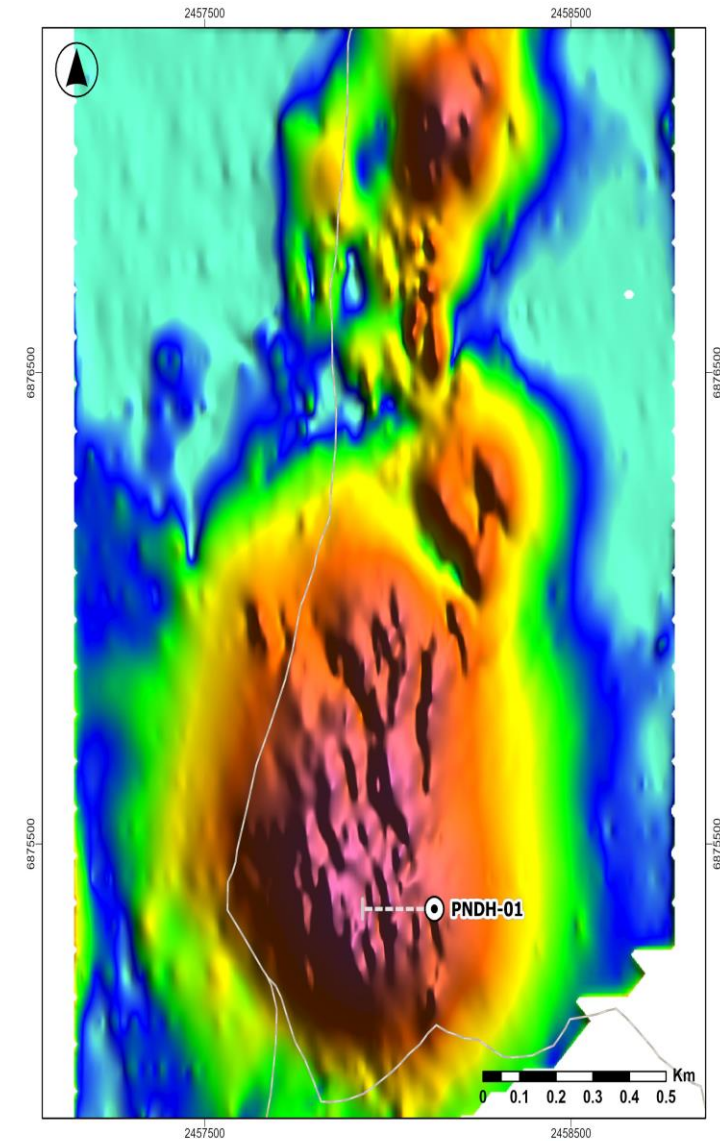
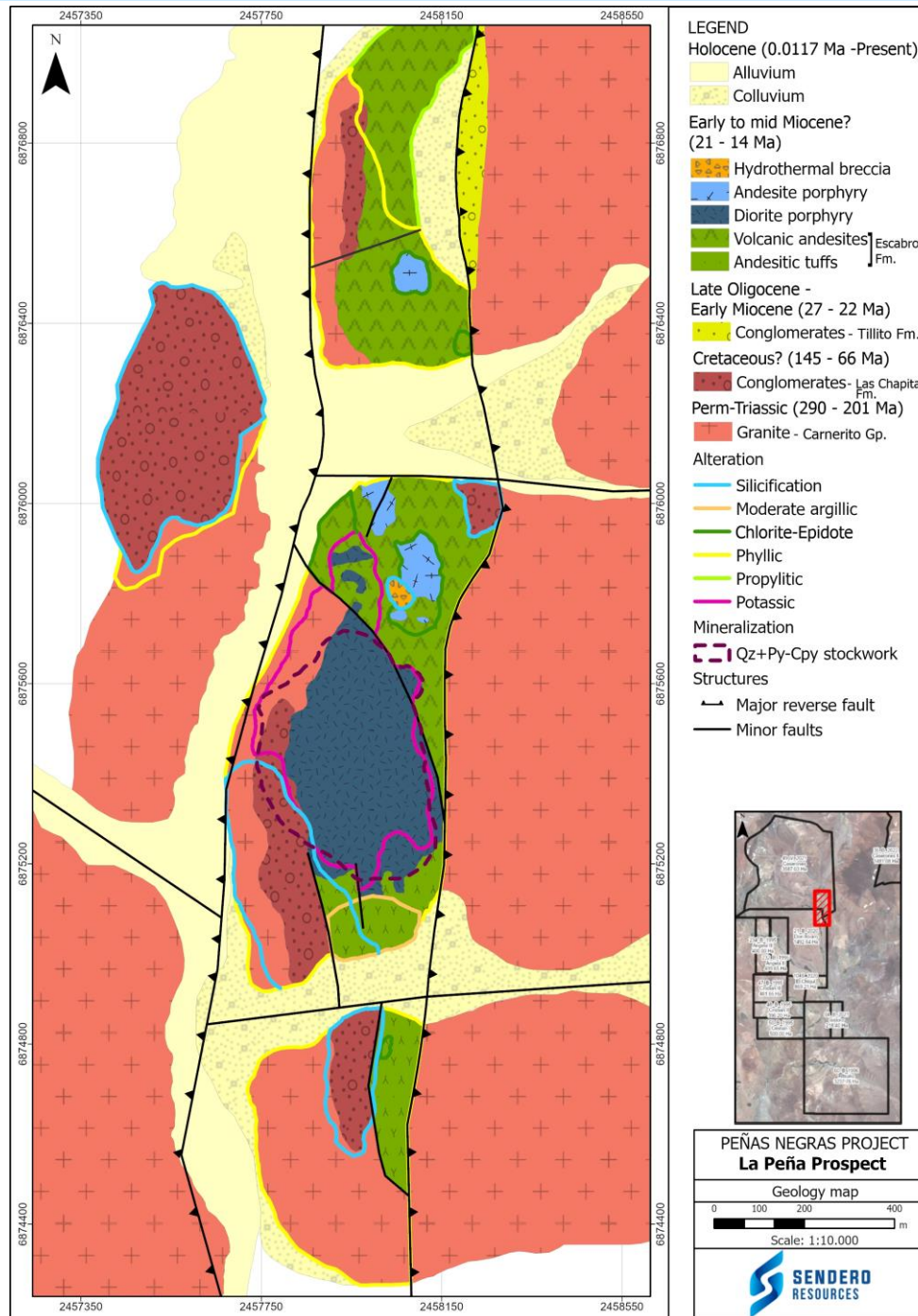
COMPOSITION HIGH-SULFIDATION EPITHERMAL/PORPHYRY (TELESCOPED) SYSTEM

- **PNDH003**, intersected **256m of 0.53 g/t AuEq** including 70m of 0.66 g/t Au Eq
- An **advanced argillic lithocap** and **several phases of porphyry** intersected
- The upper part of the hole intersected a **phreatomagmatic breccia** with intense pervasive residual **vuggy silica** and clays with **alunite** with **pyrite-enargite-chalcocite** and black sulfide veins.
- Below 159m the hole intersected high sulfidation mineralization and advanced argillic alteration overprinting **porphyry-style sericite and potassic (K-feldspar-biotite) alteration with A-type quartz veinlets.**
- Metal Values up to **1.11 g/t Au** (110-112m), **1.35% Cu** (254-256m), 9.4 g/t Ag (254-256m) and 200pm of Mo (86-88m) were intersected



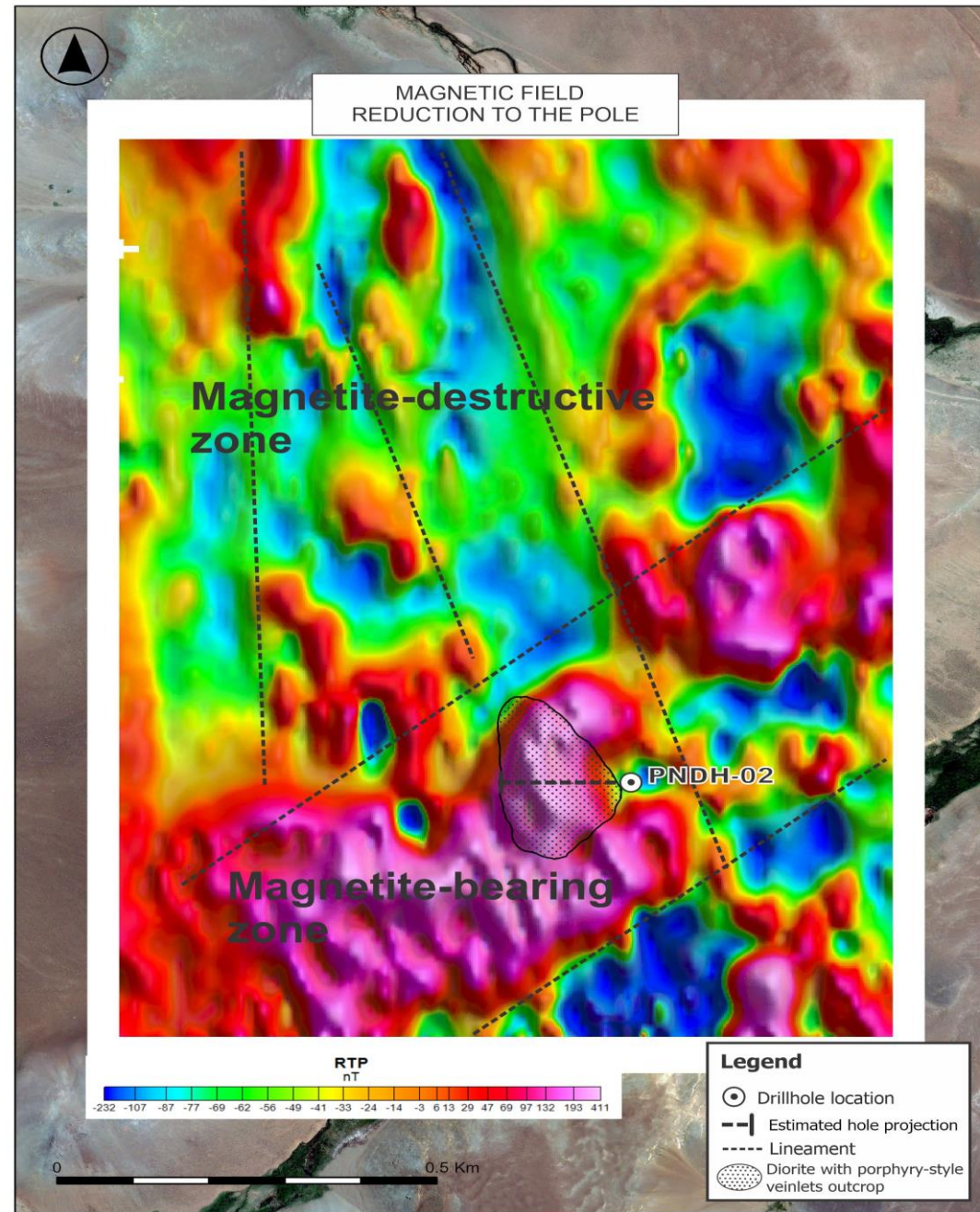
LA PEÑA: COPPER-GOLD PORPHYRY SYSTEM

- **PNDH001** intersected **226m of 0.22 g/t AuEq** including 12m of 0.34 g/t AuEq
- Intersected porphyry-style stockwork including magnetite veinlets (M-type), A and B-type quartz, anhydrite and gypsum veins
- Widespread disseminated pyrite with traces of chalcopyrite and molybdenite were encountered throughout the hole
- Hydrothermal and phreatomagmatic breccias cut the porphyry intrusive bodies.



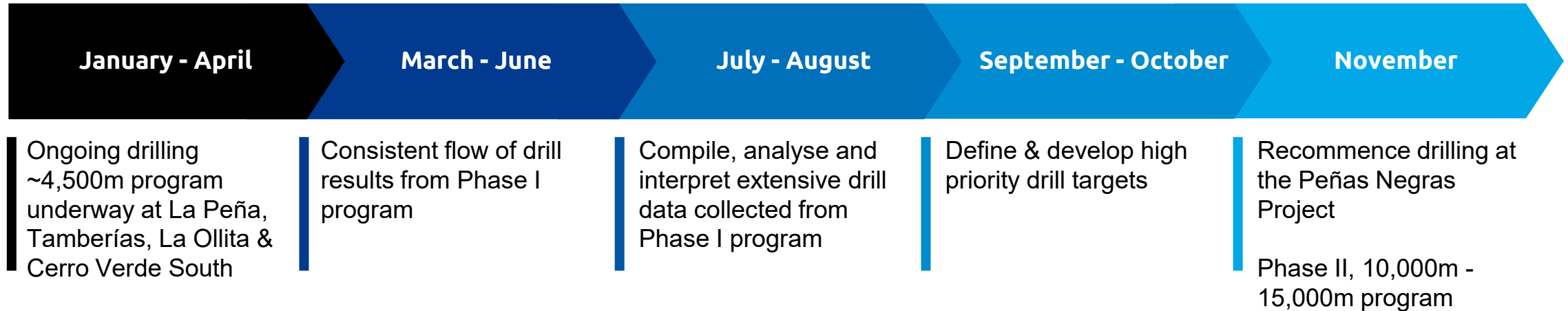
Tamberías: Porphyry & Epithermal Target (Potential Telescoped)

- PNDH002 intersected 168m of 0.22 g/t AuEq including 8m of 0.71 g/t Au Eq
- Intersected Au-CU mineralization in porphyry intrusives with breccia phases.
- Alteration is chlorite-illite-sericite overprinted on potassic alteration.
- Quartz-magnetite veinlets and stockwork veining of gray quartz are recognized throughout the entire hole.
- Abundant disseminated pyrite, with traces of chalcopyrite and molybdenite, are present throughout the hole.



PEÑAS NEGRAS PROJECT

2024 WORK PROGRAM





**SENDERO
RESOURCES**

CONTACT US



Michael Wood | Executive Chairman
info@senderoresources.com



Senderoresources.com
TSXV: SEND